

# Visitor's Guide *Greenville - Pitt County, NC*



CULTURE



RECREATION



EDUCATION



# Greenville

*More than you expect* ■ North Carolina

MEDICINE

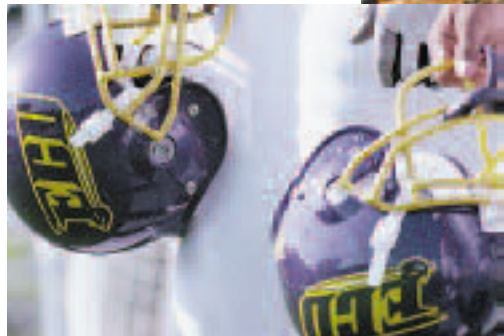
# Welcome surprises in the heart of Eastern North Carolina

## A growing city

Greenville and Pitt County have emerged as the commercial, cultural, educational and medical hub of Eastern North Carolina. Greenville, the county seat, has grown into a thriving small metropolitan city of over 80,000; Pitt County has a total population of 156,000. Greenville, founded in the mid-1700s on the banks of the Tar River and originally known as Martinsborough, changed its name in 1786 to honor Revolutionary War hero Nathaniel Greene. The county, founded in 1760 under British Colonial government, got its name from statesman and orator William Pitt, Earl of Chatham.

## Education and medicine

Much of Greenville-Pitt County's growth is attributed to East Carolina University, the state's third largest and fastest growing



university. Founded as a teacher's college in 1907, ECU is a flourishing institution offering bachelor, masters and doctoral programs, as well as the top-notch Brody School of Medicine. ECU's Health Sciences Complex and University Health Systems of Eastern North Carolina/Pitt County Memorial Hospital are the anchors for a proposed 2,000-acre medical research and development park.

Pitt County Memorial Hospital, with 861 beds, is now the third largest in the state. The East Carolina Heart Institute, a collaboration between the hospital and ECU, is devoted to the prevention and treatment of all levels of cardiovascular disease and employs a fully integrated

approach to medical care combining education, research and advanced surgical technology.

The university is an area attraction in and of itself, providing year-round sporting events, theatrical performances, art exhibits and musical performances, as well as lectures and educational seminars.



## Business and industry

Area industries advance the latest manufacturing technology. Over 100 manufacturing facilities provide diverse employment opportunities and a solid economy, complemented by sophisticated professional services and entrepreneurial sectors.

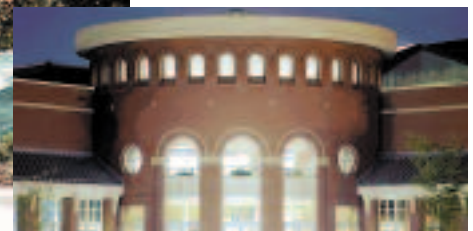
## Gracious southern hospitality

Greenville is a preferred base for exploring Eastern North Carolina's vast historic, natural and recreational resources. The central location and strong hospitality infrastructure make Greenville the logical hub. Over 2000 hotel rooms and 320 restaurants cater to all tastes, economy-minded to luxurious. Visitors are quick to comment that the wealth of amenities and the pleasant southern atmosphere are "more than you expect."

## Within easy reach

Greenville has direct four-lane highway access from all North Carolina borders. The Pitt-Greenville Airport has five daily direct flights to Charlotte serviced by US Airways Express. Pitt County is approximately 30 miles from Interstate 95, and 85 miles from Raleigh, the state capital.

Geographic location and easy affordability make Greenville-Pitt County a repeat choice for travelers. The bustling activity yet less hustling pace entice many to come back and stay.



# Educational opportunities: excellence at every level

## East Carolina University

252-328-6640  
www.ecu.edu

East Carolina University is a nationally recognized doctoral research institution offering a wide range of graduate and undergraduate programs. The Brody School of Medicine at ECU is nationally ranked as one of the best in the



*East Carolina University is nationally recognized for undergraduate and graduate courses of study.*

emerging fields of telemedicine and robotic surgery. In addition to being the home of Pirate athletics, ECU hosts numerous performances and exhibitions that showcase the talent of world-famous as well as aspiring student artists.

## Pitt Community College

252-321-4200  
www.pittcc.edu

With nearly 8,000 students enrolled, Pitt Community College is one of the region's most highly-rated technical and vocational community colleges. PCC offers a variety of curricula, including 49 associate degree, 68 certificate and 24 diploma programs. The college has developed a specialization in allied health programs and currently offers more health and science curricula than any community college in the eastern part of the state. Pitt is also a leader in distance education, with 19 programs offered entirely online and more than 200 courses offered via the Internet, N.C. Information Highway and community-based classes. Many of PCC's continuing education and community development services, including small business counseling, adult basic education, occupational extension courses and law enforcement training, are located at the college's Greenville Center on Memorial Drive. The college fields four intercollegiate athletic teams: baseball, men's basketball, fast-pitch softball and women's volleyball.

## Pitt County Public Schools

252-830-4258  
www.pitt.k12.nc.us

Pitt County Schools has 35 schools with more than 23,200 students in attendance. The school system is one of the largest employers in Pitt County with more than 3,000 employees.

Pitt County Schools consists of a 12-member governing Board of Education, which is the largest board in the state. It is made up of six districts, with two seats per district. Members are elected and serve six-year staggered terms.

The system, accredited by the North Carolina Department of Public Instruction and the Southern Association of Colleges and Schools, participates in a state performance-based accountability plan. Both district level and school based teams comprised of teachers, parents and administrators annually



*Public schools, private schools, a university, a community college and a vocational center help make Pitt County an educational center.*



develop School Improvement Plans to meet state guidelines as well as the unique needs of their students. Areas of focus include creating an atmosphere of higher academic excellence, and a climate that fosters good citizenship, responsible behavior and character building activities.

The system has a strong tradition and balance of academics, arts and athletics. Pitt County Schools' graduates attend the finest colleges and universities in the country and have been successful in receiving excellent scholarships.

## Eastern Carolina Vocational Center

252-758-4188

ECVC, which was awarded Industry of the Year by the Pitt County Development Commission in 2008, is a company with a social mission to help people with disabilities attain a higher quality of life through achievement of their vocational goals. The non-profit is self-sustained through local and federal government contracts.

# World-class business, industry and health care

## Business and industry focus

The Greenville, NC, MSA is not only rated the #2 Best Small Metro for Business and Careers by Forbes.com (2009), it is one of the Best Performing Small Metros according to the Milken Institute (2008). The local economy is well diversified among health care, government (including federal court), education,

commercial, and manufacturing sectors. Entrepreneurial development has had an increasingly strong impact.

Major employers include East Carolina University, University Health Systems, NACCO Materials Handling Group (forklifts), DSM Pharmaceuticals, ASMO (electric motors), Grady-White Boats, Alliance



## Health care

University Health Systems of Eastern North Carolina, affiliated with the Brody School of Medicine, represents one of the largest health care systems in the state. This includes Pitt County Memorial Hospital, seven community hospitals, physician practices, home health and other independently operated health services. With more than 10,000 employees, the system focuses on regional health concerns, emphasizes wellness, prevention and education, and addresses the clinical needs of people from the Outer Banks to the fringes of North Carolina's Piedmont.

One International (tobacco), Overton's (sporting goods), TRC, Inc. (metal fabrication), Karastan-Greenville Yarns and Attends (adult incontinence products).

## Technology Enterprise Center of Eastern Carolina

Fostering the development of technology-based businesses, the Technology Enterprise Center offers office, laboratory, and light manufacturing space to technology-based companies on a short-term lease basis. Cooperation and support from ECU's School of Business, School of Industry and Technology, and School of Medicine are assured through direct involvement by representation of each school of the Center's Board of Advisors. Current tenants include Pioneer Surgical Orthobiologics, CTMG (Clinical Trials Management Group), PhytoMyco, Bioworks Bioprocessing Center, Pitt Community College (labs and classrooms) and Chirazyme Labs, Inc.



# Discover colorful history, homes and architecture

## College View Historic District

*North Side of Fifth Street, Greenville*

Reflects the period of growth and development of East Carolina University and the status of Greenville as the educational, commercial, and cultural hub of Eastern North Carolina. College View is an excellent example of an early 20th-century residential neighborhood, and the architecture prevalent within the area reflects the popularity of styles of that era including Craftsman Bungalow, American Foursquare, and Spanish Revival. The historic district contains over 250 structures including

several university-owned buildings as well as residences. The College View Neighborhood was placed on the National Register of Historic Places on March 19, 1992.

## Farmville Historic District

Placed on the National Register of Historic Places in 1994. The district encompasses the entire Main Street section of downtown, the May Museum, and residential properties on Church and Wilson streets. A mixture of Victorian and Colonial styles built in the late 1800s and early 1900s is evident.

## Ayden Historic District

Placed on the National Register of Historic Places in 1994. The district encompasses 146 acres and includes 485 buildings representing Queen Anne, Colonial Revival, and Mission/Spanish Colonial Revival styles of architecture.

## The Federal Building

*215 S Evans Street, Greenville*

A well-preserved example of the Florentine Renaissance Revival Style, which is rare in Eastern North Carolina; this was formerly a U.S. Post Office.

## The James L. Fleming House

*302 S Greene Street, Greenville*

One of the most significant examples of the Queen Anne style still surviving in Greenville; this is now home to the Greenville-Pitt County Chamber of Commerce.

## The Robert Lee Humber House

*117 W Fifth Street, Greenville*

A typical late 19th-century style residence with Queen Anne and Colonial Revival details; home to the eastern field office of the N.C. Division of Archives and History.

## The Hassell-James Building

*105-107 W Third Street, Greenville*

The best preserved group of early 20th-century offices in Greenville.

## The Jones-Lee House and Grounds

*805 Evans Street, Greenville*

The lone residential building left in the urban renewal target area, and a reminder of the late 19th-century houses that once lined the east side of Evans Street.

## The William H. Long House and Grounds

*200 E Fourth Street, Greenville*

An exceptionally fine example of the Neo-Classical Revival style; one of the few residential resources remaining that reflects Greenville's early 20th-century growth and development.

## Pitt County Courthouse

*Corner of S Evans Street & W Third Street, Greenville*

A three-story, hip-roof brick building of the most representative phase of the Neo-Classical Revival style of architecture.

## The Rotary Club Building

*209 Johnson Street, Greenville*

A rare survivor of an early 20th-century club building; the first, and for many years the only, Rotary-owned club building in the world.

## The Skinner House and Grounds

*803 East Fifth Street, Greenville*

A two-and-a-half story, hip-roof brick building of the most representative phase of the Neo-Classical Revival style.

## The Skinner-Moye House and Grounds

*123 West Third Street, Greenville*

One of the oldest residences in Greenville; one of only two documented pre-Civil War buildings still standing in Greenville's central business district.

## Third Street School and Grounds

*600-700 W Third Street, Greenville*

One of the city's oldest surviving school buildings; distinctive North Italian Renaissance design.



# Fascinating gems of art and history



## Museums

### The A.W. Ange House

2543 Church Street

Winterville, 252-321-2660

This community museum and cultural center is included in the National Register of Historic Places. The 1901 Victorian house is sponsored by the Winterville Historical & Arts Society, Inc., and the collection houses over 1,000 artifacts. Open by appointment for groups.

### East Carolina Village of Yesteryear

4570 County Home Road

Winterville, 252-329-4200

Depicts life in Pitt County from 1840 to 1940. A country store, a traditional schoolhouse, a log church, farm machinery, and other artifacts from the period spark the interest of all who visit. Although in the process of relocating, call for updates on opening.

### Wellington B. Gray Gallery

East Carolina University

Jenkins Fine Arts Center

Greenville, 252-328-6336

Internationally-known contemporary artists in fine arts, crafts, graphics, video, and installation art, as well as student and faculty exhibitions. Open Monday–Friday 10am–4pm; Saturday 10am–2pm. Closed during all university holidays.

### Greenville Museum of Art

802 South Evans Street

Greenville, 252-758-1946

Features changing exhibits from its permanent collection of 19th- and 20th-century American art, as well as traveling regional and national exhibits. The museum also owns one of the largest public collections of North Carolina Jugtown Pottery. Open Wednesday–Friday 10am–4:30pm, and Saturday 1pm–4pm.

### Grifton Historical Museum of Area Culture

437-A Creekshore Drive, Grifton, 252-524-5168

Houses exhibits of items typical of the area's past and present culture, including prehistoric and Tuscarora Indian artifacts, tobacco and farming tools, fossils, natural history, and Civil War exhibits. A Shad Festival room and an exhibit on the world's first polyester plant are unique to the museum. Open in April during the Shad Festival, by appointment for groups, and on the 1st Sunday of the month 2–4pm.

### Ledonia Wright African-American Cultural Center

Bloxton House, East Carolina University

Greenville, 252-328-1680

The Ledonia Wright Cultural Center is a cultural education facility for East Carolina University, its visitors, and Eastern North Carolina. It houses the university's 150-piece art collection made by the Kuba of Zaire, donated by Winston-Salem's Dr. James Lankton. Open Monday–Thursday 8am–8pm and Friday 8am–5pm.

### May Museum Farmville Heritage Center

3802 S Main Street, Farmville, 252-753-6725

The museum, located in a Civil-War era home in downtown Farmville, is dedicated to preserving the rich history of Farmville and the surrounding region. Among its many displays the museum houses a one-family quilt collection dating from the 1830s through the 1940s, considered to be one of the finest in North Carolina. Rotating displays and captivating tales of the area's past invite visitors to visit and come back often. Monday–Friday 9am–5pm. Weekends by appointment.

## Art Galleries

### The Art Room Gallery & Studio of Nell Lee Hayes

403 S. Evans Street

252-341-4119

Monday-Saturday 12 noon-5pm

### City Art Gallery

511 Red Banks Road

252-353-7000

Monday-Friday 10am-6pm

Saturday 10am-4pm

### The Pitt County Arts Council at Emerge

404 S Evans Street

252-551-6947

www.pittcountyarts.org

The Pitt County Arts Council at Emerge is the local arts council for Pitt County. The PCAC is a non-profit arts organization dedicated to educate, inspire, and make the arts accessible to the entire community within Greenville & Pitt County and the Eastern North Carolina region. Programs include several gallery spaces with monthly rotating art exhibitions, a sales gallery and gift shop featuring NC artists, a Painted Pottery Studio offering walk-ins, and a full community art center with classes for children and adults in pottery, metalsmithing, photography, painting, drawing and more.

### Shenandoah Graphics & Framing

1400 Charles Boulevard

252-353-6006

Monday-Friday 9:30am-6pm

Saturday 9am-4pm

(Summer 10am-1pm)



# National-quality performing arts

## Music & Theatre

### The East Carolina University S. Rudolph Alexander Performing Arts Series

East Carolina University, Greenville  
800-ECU-ARTS, 252-328-4788  
[www.ecuarts.com](http://www.ecuarts.com)

Top names in the world of artists and entertainers—from Tony Bennett to the Bolshoi Ballet, from Harry Belafonte to Wynton Marsalis, from My Fair Lady to the Russian National Orchestra—take part in Eastern North Carolina's most highly acclaimed series.

### ECU/Loessin Playhouse

East Carolina University, Greenville  
252-328-6829, [www.ecuarts.com](http://www.ecuarts.com)

Functioning as the producing arm of ECU's School of Theatre and Dance, the Playhouse typically presents a season of five productions between October and May. The season usually consists of a musical, three plays (comedies, classics, and dramas) and a dance concert of varying styles and choreography. Each production runs Thursday through Tuesday and includes a Sunday matinee. Performances are held in the McGinnis Theatre on the East Carolina University campus.

### Four Seasons Chamber Music Festival of Eastern North Carolina

East Carolina University, Greenville  
800-ECU-ARTS, 252-328-4788  
[www.ecuarts.com](http://www.ecuarts.com)

A host of world-class chamber musicians converge upon ECU's School of Music for residencies and concerts between September and April. Artistic director Ara Gregorian and friends perform works from the classical repertoire in the intimate A.J. Fletcher Recital Hall.

### East Carolina University Family Fare Series

East Carolina University, Greenville  
800-ECU-ARTS, 252-328-4788  
[www.ecuarts.com](http://www.ecuarts.com)

Entertaining and wholesome performances for the entire family on Friday evenings. Professional attractions hold the young and young-at-heart spellbound at these lively performances by nationally-known and first-rate emerging theater companies.

### ECU/Loessin Summer Theatre

East Carolina University, Greenville  
252-328-6829, [www.ecuarts.com](http://www.ecuarts.com)

As a professional, producing theatre for over 35 years, the Summer Theatre typically presents a season of three productions in June and July. The usual season consists of musicals, comedies, and dramas. Each production runs Tuesday through Saturday (matinee & evening). Performances are held in the McGinnis Theatre on the ECU campus.

### FolkArts Society of Greenville

Greenville, 252-752-7350

A concert series of traditional and contemporary folk and country music and other performing arts.

### Freeboot Fridays

Uptown Greenville  
252-561-8400

A series of outdoor "Alive at Five" style Friday night concerts preceding Pirate home football games. Features exhibits of Uptown vendors' wares, children's activities, food samplings, and a beer garden.

### Magnolia Arts Center

888-MAC-EVENT, Greenville  
[www.magnoliaartscenter.com](http://www.magnoliaartscenter.com)

Magnolia Arts Center is a comprehensive arts organization offering the best the community has to offer with community theatre productions, an independent film series, local music, film festivals, and more.

### R. A. Fountain

6754 E. Wilson Street, Fountain  
252-749-3228

Traditional old-time, bluegrass and country music in a circa 1916 general store. Regional books and CDs, art and collectibles. Homemade refreshments. Open Friday and Saturday evenings for music, some Thursdays and Sundays. Schedules at [www.rafountain.com](http://www.rafountain.com).

### Sunday in the Park

Greenville Town Commons  
252-329-4567

A summer and early fall concert series held at the amphitheater at the Greenville Town Commons on the banks of the Tar River. The series showcases all types of music and drama.

## Movie Cinemas

### Carmichael 12-Screen Family Entertainment Center

East Fire Tower Road  
Greenville, 252-353-4988

### Greenville Grande 14

750 SW Greenville Blvd.  
Greenville, 252-353-6684

# A remarkable variety of parks and recreation

## Recreation & Parks

**Over 20 parks grace the Pitt County area and provide a variety of recreational opportunities including picnicking, hiking, fishing, boating and an off-leash dog park.**

### River Park North

1000 Mumford Road, Greenville  
252-329-4560

A natural area encompassing 324 acres of land and water with 1.2 miles fronting the Tar River. Includes over 250 acres of rich bottomland forest, over 20 acres of open grassland, and four lakes covering 48 acres. Year-round fishing, hiking trails, picnicking and bird watching. Pedal boating offered seasonally with reservations. Closed Mondays.  
November–February 8am–5pm  
March–April 7am–7pm  
May–August 6am–8pm  
September–October 7am–7pm

### Science & Nature Center

1000 Mumford Road, Greenville  
252-329-4561

Features North American Wildlife Exhibit, Shells are Everywhere Exhibit, and Waterfowl of the Atlantic Flyway. Eastern NC snakes and turtles are displayed. A 10,000-gallon aquarium with live fish, a touch tank, and interactive displays are also located at the center.  
Tuesday–Saturday 9:30am–5pm  
Sunday 1pm–5pm

### Green Mill Run Greenway

252-329-4567

Spans from Charles Blvd. to Green Springs Park on E Fifth Street, Greenville

A multi-use trail that spans approximately 3.5 miles. The Greenway links parks, churches, schools, the University, flood plain lands and other undeveloped natural resources within the City of Greenville.

### Extreme Park

2000 Cedar Lane, Greenville  
252-329-4567

In-line skating, skateboarding, biking, and hockey.  
Helmet required.  
Monday–Friday 9am–9pm

### Off-Leash Dog Park

703 River Road, Greenville  
252-329-4567

A place where dogs with their owners can socialize without being on leashes. Separate play areas for large and small dogs.

### Recreation & Parks Departments

For information on parks, tennis courts, golf courses and other community activities, contact a local Recreation and Parks department.

### Ayden Recreation & Parks Department

252-746-4152

### Farmville Recreation & Parks Department

252-753-4741

### Greenville Aquatics & Fitness Center

252-329-4041

### Greenville Recreation & Parks Department

252-329-4567

### Grifton Civic Center

252-524-3752

### Winterville Recreation & Parks Department

252-756-2221

## Bowling

### AMF East Carolina Lanes

700 E Red Banks Road, Greenville  
252-355-5510

Monday–Tuesday 10am–11pm  
Wednesday 12 noon–10pm  
Thursday 12 noon–1am  
Friday–Saturday 10am–1am  
Sunday 1pm–10pm

## Golf

### Ayden Golf & Country Club

Ayden Golf Club Road, Ayden  
252-746-3389

This 18-hole golf course has a full-service golf pro shop and grill. Tee times are available on weekdays.

### Bradford Creek Golf Course

Route 5, Greenville, 252-329-4653

This 18-hole public golf course offers a full-service pro shop, lessons, and lighted driving range.

### Farmville Golf & Country Club

308 Bynum Drive, Farmville  
252-753-3660

This 18-hole golf course offers a golf pro shop, grill, and cart rentals. Tee reservations are requested for weekends and holidays.

### Indian Trails Golf Club

Route 1, Country Club Drive, Grifton,  
252-524-5485

This 18-hole, par 71 golf course is open to the public seven days a week. The pro shop offers a snack bar and golf equipment. Cart and equipment rentals are available.

### Ironwood Golf Course

Highway 43, Greenville, 252-752-GOLF

A Lee Trevino signature course with bent greens and Tifton 419 fairways offers club house, practice area, and other golf course amenities.

## Tennis

### Courtside Athletic Club

7150 Wimbledon Drive, Greenville  
252-439-1000

Monday–Thursday 7am–9:30pm  
Friday 7am–6pm, Saturday 8:30am–5pm  
Sunday 9am–3pm  
Extended hours in cooler weather

## Other

### Bladez On Ice

104 E Red Banks Road, Greenville  
252-756-6000

### Briley's Farm Market

Sunny Side Road & Old Pictolus Road  
252-413-6155

Farm market with playground, pony rides, farm mazes, nature walks, petting barn, gemstone mining, and more. Seasonal hours.

### Fusion Skate Park

504 W 10th Street, Greenville  
252-758-0003

Indoor/outdoor skate park.  
Monday–Friday 1pm–9pm  
Saturday 11am–9pm  
Sunday 1pm–6pm

### Greenville Fun Park

Highway 264-A & Old Creek Road  
Greenville, 252-757-1800

GoKart rides, miniature golf course, bumper boats, kids track, and arcade. Seasonal hours.  
Friday 4–10pm  
Saturday 12–10pm  
Sunday 2–8pm

### Renston Homestead

4064 NC 903 South, Winterville  
252-321-3204

Farm tours and field days.

### The Sports Connection

1701 E 14th Street, Greenville  
252-215-9090

Batting cages, basketball courts, game room and birthday party room.  
Monday–Friday 1pm–9pm  
Saturday 10am–5pm  
Sunday 1pm–5pm

### The Zone

4801 Reedy Branch Road, Greenville  
252-756-9663

Indoor batting cages, arcade and pro shop.  
Monday–Friday 6pm–9pm  
Saturday 9am–6pm  
Sunday 2pm–6pm



# In the midst of natural and historic wonders

**Greenville and Pitt County serve as a gateway to the natural and historic wonders of Eastern North Carolina, a short and scenic drive away.**

## Natural attractions

North Carolina's fabled Outer Banks include more than 150 miles of unspoiled beaches comprising Cape Hatteras National Seashore. Here, the Wright Brothers made their first flight and English explorers first set foot on the American continent at Roanoke Island.

The Crystal Coast offers ocean-lovers pristine beaches at Fort Macon State Park and deep-sea



fishing charters with the world's largest Gulf Stream fishing fleet. The N.C. Aquarium features encounters with sea creatures in their natural habitat. In the quaint seaport town of Beaufort, enjoy waterfront shopping and dining. The N.C. Maritime Museum interprets North Carolina's multi-faceted historical alliances with the sea.

Goose Creek State Park is located along the placid banks of the Pamlico River. Encompassing 1,400 acres of pristine river wetlands, the park is the perfect setting for camping, hiking, boating, or an afternoon picnic.

Lake Mattamuskeet National Wildlife Refuge features the largest freshwater lake in North Carolina.

Its unique geological history and profusion of winter birds draw thousands of outdoor enthusiasts each year.

The Pamlico and Neuse rivers are two of the largest estuarine systems in the nation, with over 1,500 miles of shoreline.

Croatan National Forest is comprised of 157,000 acres of low, sandy wetlands called pocosins.

This area offers a variety of outdoor recreational opportunities including camping, hiking, fishing, and boating.

Cliffs of the Neuse State Park consists of 608 acres in Wayne County along the Neuse River, including 35 acres of tent/trailer campsites. The highest

cliffs on the river offer amateur geologists a glimpse of the prehistoric past.

Washington, just a short drive up the road, is home to the North Carolina Estuarium. The Estuarium is an environmental education center interpreting North Carolina's sounds and coastal waters.

## Historic attractions

Historic Edenton was once the colonial capital of North Carolina. With homes dating back to 1712, Edenton has been restored to its colonial appearance and offers walking tours of the town along a picturesque waterfront.

Historic Bath is known as North Carolina's first town. This peaceful



town served as a colonial capital and was home to the infamous Blackbeard the pirate. The historic homes and St. Thomas Church, the oldest existing church in the state, are included on a walking tour.

Historic Washington is the original Washington, named in 1776. Located on the banks of the Pamlico River, the town features a self-guided tour through the Historic District.

Charles B. Aycock Birthplace is the home of Governor Charles B. Aycock, known as the education governor. The homeplace is a typical 19th-century family farm. Tours of the farm buildings, including the house, the separate open-hearth kitchen, and a one-room schoolhouse are offered.

Historic New Bern is located at the confluence of the Trent and Neuse rivers. This town still retains much of its colonial charm from its days as North Carolina's provincial capital.

Tryon Palace, an elegant Georgian-style mansion, served as the Royal Governor's home and then as the capital of the colony. The New Bern historic district surrounds the

palace and is comprised of over 100 structures covering architectural styles of the last 200 years.

Fort Branch is the largest earthen Civil War fortification in the southeast and home to the First North Carolina Reenactor Regiment. Featuring a working camp and museum, the fort is the site of reenactments and living history demonstrations.

The CSS *Neuse* served the Confederate Army until 1864 when it was destroyed and sunk near Kinston. In 1963, the remains were raised from the river and are now on display.

American history began on the Outer Banks with the fabled Lost Colony, which is celebrated in an outdoor musical performance each summer. Nearby are the *Elizabeth II*, the Wright Brothers National Memorial, the Cape Hatteras Lighthouse, and the quaint seaside Village of Ocracoke.

Hope Plantation near Windsor is an elegant 1803 Georgian and Federal style home of one of our former governors. Somerset Place near Columbia was one of the largest rice plantations in the south.

## Mileage from Greenville:

To Bath	38 miles
To Cape Hatteras	170 miles
To Edenton	70 miles
To Kinston	27 miles
To Kitty Hawk	138 miles
To Manteo	120 miles
To Morehead City	79 miles
To New Bern	44 miles
To Oriental	68 miles
To Rocky Mount	41 miles
To Washington	22 miles
To Williamston	24 miles
To Wilson	38 miles
To Windsor	42 miles

# Shop for great finds; enjoy amazing variety.

## Shopping

The retail sector has acquired a regional draw bringing shoppers to Greenville from all over Eastern North Carolina. Numerous options offer shoppers a variety in price, selection, and style, and range from consignment shops to boutiques, malls to commercial strips, and galleries to showrooms.

### Arlington Village

*Corner of Arlington Boulevard and Red Banks Road, Greenville*

A unique collection of nearly 40 specialty shops catering to the discriminating shopper. Men's and women's apparel, jewelry, fine arts and crafts, and electronics are just a few of the surprises you will discover. Individual store hours vary.

### Artisans Market

*150 Plaza Drive, Greenville  
252-355-8008*

A shopping experience with more than 75 exclusive shops featuring decorative accessories and fine gifts.

### Greenville Mall

*SE Greenville Boulevard, Greenville  
252-756-1748*

Over 75 stores including GAP, Express, American Eagle Outfitters, Gymboree, JC Penney, Pier 1 Imports, Bath & Body Works, Victoria's Secrets, and other specialty shops plus a food court. Open Monday-Saturday 10am-9pm and Sunday 1pm-6pm.

### La Promenade Shopping Center

*Greenville Boulevard and Red Banks Road*  
This addition to the area shopping scene offers boutique, specialty and retail clothing stores with appeal for the whole family, plus food choices for all tastes. Men's and women's apparel, youth casual,

outdoor equipment and clothing, toys, salons, contemporary design, wireless communication and more!

### Lynndale Shoppes

*Red Banks Road, Greenville*

A place where uniqueness and quality combine to offer distinctive shopping excellence. Stop by and experience a shopping and dining extravaganza.

### New River Pottery

*3750 Sterling Pointe Drive, Winterville  
252-756-1776*

Huge selection of flowers, glassware, pottery and linens. Low everyday pottery prices. Open Monday-Saturday 9am-9pm and Sunday 11am-6pm.

### Uptown Greenville

*Located downtown along  
Evans and 5th streets  
[www.uptowngreenville.com](http://www.uptowngreenville.com)*

Over 40 independently-owned retail shops and restaurants in the Uptown district provide you with a unique shopping experience in the heart of Greenville.



## Antique shopping

### Cable at Woodside Antiques

*3760 S. Main Street, Farmville, 252-753-9929  
Tuesday-Saturday 10am-5pm*

### Dapper Dan's

*801 Dickinson Avenue, Greenville, 252-752-1750  
Tuesday-Saturday 11am-5pm*

### Dickinson Avenue Antique Market

*701 Dickinson Avenue, Greenville, 252-830-1455  
Monday-Saturday 10:30am-5pm*

### Fox & Hound Antiques

*3750-H Sterling Pointe Drive, Winterville, 252-321-0091  
Monday-Saturday 10am-5pm*

### Now and Then Design

*801 Red Banks Road, Greenville, 252-756-8470  
Monday-Friday 10am-5pm*

### Red Oak Show & Sell

*3921 Dickinson Avenue, Greenville, 252-230-7189  
Monday 11am-5pm  
Thursday-Saturday 11am-5pm*

### Remember When

*705 Dickinson Avenue, Greenville, 252-757-1805  
Monday-Saturday 11am-5:30pm*

### Shipwreck

*7615 Pitt Street, Grimesland, 252-757-1127  
Saturday 10am-5pm  
Sunday 1pm-5pm*

### Valerie's Antiques

*924 Dickinson Avenue, Greenville, 252-916-8027  
Monday-Saturday 9am-6pm*

# A good night's sleep and a very pleasant visit

## Lodging

**KEY:** Restaurant: Rstr  
Continental Breakfast: Cont Brkft  
(Indoor) Swimming Pool: (I)Swmg Pl  
Shuttle: Shtl  
Exercise room: X  
Pets: P

### Affordable Suites of America

101 Dansey Road, Greenville  
252-355-5717

### Best Western Suites

2310 NE Greenville Blvd., Greenville  
252-752-2378/800-WESTERN  
Cont Brkft/Swmg Pl/Shtl/X

### Camelot Inn

2828 S Memorial Drive, Greenville,  
252-756-1150  
Swmg Pl

### Candlewood Suites

1055 Waterford Commons Drive,  
Greenville  
252-317-3000

### City Hotel & Bistro

203 SW Greenville Blvd., Greenville  
252-355-8300/877-271-2616  
Rstr/Cont Brkft/Swmg Pl/X

### Comfort Inn

3900 S Memorial Drive, Winterville  
252-355-0070/800-228-5150  
Cont Brkft/Swmg Pl/X

### Courtyard by Marriott

2225 Stantonsburg Road, Greenville  
252-329-2900/800-321-2211  
Cont Brkft/I Swmg Pl/X

### Days Inn

810 S Memorial Drive, Greenville  
252-752-0214/800-DAYSINN  
Swmg Pl

### East Carolina Inn

2095 Stantonsburg Road, Greenville  
252-752-2122/800-842-6576  
Cont Brkft

### Economy Inn

1901 Stantonsburg Road, Greenville  
252-754-8047  
Cont Brkft/P

### Greenville Motel

2309 S Memorial Drive, Greenville  
252-756-1130

### Hampton Inn Greenville

305 SW Greenville Blvd., Greenville  
252-355-7400/800-HAMPTON  
Cong Brkft/I Swmg Pl/Shtl/X

### Hilton Greenville

207 SW Greenville Blvd., Greenville  
252-355-5000/800-HILTONS  
Rstr/Cont Brkft/Swmg Pl/Shtl/X

### Holiday Inn Express

909 Moye Boulevard, Greenville  
252-754-8300/800-HOLIDAY  
Cont Brkft/Swmg Pl/Shtl

### Home-Towne Suites

2111 W Arlington Blvd., Greenville,  
252-752-3411  
P



### Horizzn Studio & Suites

2710 S Memorial Drive, Greenville  
252-756-5556  
Shtl

### Jameson Inn

920 Crosswinds Street, Greenville  
252-752-7382/800-JAMESON  
Cont Brkft/Swmg Pl/X/P

### The Marlboro Inn

Highway 264 Bypass, Farmville  
252-753-3145  
Swmg Pl

### Microtel Inn & Suites

450 Moye Boulevard, Greenville  
252-758-7282  
Cont Brkft/X

### Motel 6

301 SE Greenville Blvd., Greenville  
252-756-2792/800-874-9000  
Swmg Pl

### Quality Inn

821 S Memorial Drive, Greenville  
252-758-5544, 800-4CHOICE  
Cont Brkft/Swmg Pl/Shtl/X

### Super 8 Motel

1004 S Memorial Drive, Greenville  
252-758-8888/800-800-8000  
Cont Brkft

### Travelodge

3435 S Memorial Drive, Greenville  
252-355-5699/800-578-7878

### University Inn

3304 S Memorial Drive, Greenville  
252-756-7084

### Wingate Inn

3212 S Memorial Drive, Greenville  
252-355-GATE/800-228-1000  
Cont Brkft/(I)Swmg Pl/Shtl/X

### Bradford Creek Coach & RV Center

2773 Sunny Side Road, Greenville  
252-752-8886

### Tranters Creek Resort & Campground

6573 Clarks Neck Road, Washington  
252-948-0850

## Bed & Breakfast

### Fifth Street Inn at Campus Pointe

1105 E. Fifth Street, Greenville  
252-355-0699

### Paradise Bed and Breakfast

3993 Bill Adams Road, Grimesland  
252-746-2748

## Transportation

Greenville and Pitt County have direct four-lane highway access from all North Carolina borders. The Pitt-Greenville Airport has five outgoing flights daily direct to Charlotte, North Carolina.

## Commercial airlines/airports

**Pitt-Greenville Airport Authority**  
252-758-4707

### US Airways Express

800-428-4322

### Raleigh/Durham International Airport

919-840-2123

## Bus lines

**Greyhound**  
252-752-3483

## Public transportation

**GREAT-Greenville Area Transit**  
252-329-4532

## Limousine services

**Granelle's Limousine Service**  
252-752-8989

### Pirate Limo

252-327-LIMO

## Taxi services

**Aladdin Taxi**  
252-830-5466

### City Cab Company

252-758-2161

### Courtesy Cab Company

252-757-1558

### Eagle Cab Company

252-757-3687

### Starliner Cab Company

252-753-4892

# Small town delights and big city amenities

## Points of contact

### Ayden Chamber of Commerce

252-746-2266  
www.aydenchamber.com

### City of Greenville

252-329-4434  
www.greenvillenc.gov

### County of Pitt

252-902-2951  
www.pittcountync.gov

### Farmville Economic Development Partnership

252-753-4670  
www.farmville-nc.com

### Greenville-Pitt County Chamber of Commerce

252-752-4101  
www.greenvillenc.org

### Greenville-Pitt County Convention & Visitors Bureau

252-329-4200/800-537-5564  
www.visitgreenvillenc.com

### Pitt County Development Commission

252-758-1989/800-548-4153  
www.locateincarolina.com

### Pitt County Memorial Hospital

252-816-4100  
www.uhseast.com

### Pitt County Public Schools

252-830-4258  
www.pitt.k12.nc.us

### Pitt-Greenville Airport

252-758-4707

### Town of Ayden

252-746-7010  
www.ayden.com

### Town of Bethel

252-825-6191  
www.bethelnc.org

### Town of Falkland

252-757-1648

### Town of Farmville

252-753-5116  
www.farmville-nc.com

### Town of Fountain

252-749-2881

### Town of Grifton/Chamber of Commerce

252-524-5168  
www.grifton.com

### Town of Grimesland

252-752-6337

### Town of Winterville

252-756-2221  
www.wintervillenc.com

### Uptown Greenville

252-561-8400  
www.uptowngreenville.com

### Village of Simpson

252-757-1430

## Libraries

### Quinerly-Olschner Public Library

Ayden, 252-746-7026

### Bethel Library

Bethel, 252-825-0782

### East Branch Library

Greenville, 252-329-4582

### Carver Branch Library

Greenville, 252-329-4583

### Farmville Public Library

Farmville, 252-753-3355

### Sheppard Memorial Library

Greenville, 252-329-4580  
www.sheppardlibrary.org

### Grifton Public Library

Grifton, 252-524-0345

### Winterville Library

Winterville, 252-756-1786

## Greenville & Pitt County demographics

**Location:** Greenville and Pitt County are located in the north central coastal plain region of Eastern North Carolina, 85 miles east of Raleigh, 87 miles west of the Atlantic Ocean, 157 miles from Richmond VA, and 265 miles south of Washington, DC.

**Geography:** Pitt County covers 646 square miles of prime agricultural land in Eastern North Carolina. The county's highest point is 126.4 feet above sea level, in the northwest part of the county.

### Approximate Population:

Pitt County	... 151,970
Ayden	..... 4,923
Bethel	..... 1,798
Falkland	..... 117
Farmville	..... 4,656
Fountain	..... 571
Greenville	..... 76,222
Grifton	..... 2,155
Grimesland	..... 449
Simpson	..... 487
Winterville	..... 8,586

**Cost of Living:** As per Bureau of Labor Statistics and the Martin Prosperity Institute figures, the 2009 cost of living index for Greenville is 96 based on 100 being the national average.

**Weather:** Pitt County has a relatively mild climate and experiences all four seasons each year. The average summer temperature in Pitt County is 84 degrees Fahrenheit, while the average winter temperature is 44 degrees Fahrenheit. Each year, the area experiences an average 48.24 inches of rainfall. Growing season in Pitt County lasts a full 215 days annually.

## Press quotes

### 1997 & 1998 *Industry Week*

...ranked the Greenville MSA as among the fifty best places for manufacturing...

### 1998 February *Business North Carolina*

...rated Greenville as number one for top labor force in the state of North Carolina...

### 2003 *Forbes*

...ranked Greenville as number 26 out of 168 for best small places for businesses and careers...

### 2004 *Milken Institute*

...ranked Greenville number 24 in Top 118 Best Performing Smaller Metros...

### 2005 *Sports Illustrated*

...named Greenville one of 50 Sportstowns in the United States...

### 2008 *Milken Institute*

...recognized as one of the Best Performing Small Metros...

### 2009 *KaBOOM*

...recognized Greenville as a Playful City USA...

### 2009 *Forbes.com*

...recognized as the #2 Best Small Metro for Business and Careers...



## Greenville Convention Center

The Greenville Convention Center offers North Carolina's largest meeting facility east of the Raleigh-Durham area. The Center features 74,000 square feet of flexible meeting space and the capacity to accommodate groups of up to 3,000 under one roof. Four hundred thirty-three full service guestrooms are located on site with an additional 1,600 within a few miles.



**Greenville-Pitt County Convention & Visitors Bureau**  
303 SW Greenville Boulevard, Greenville NC 27834  
P.O. Box 8027, Greenville NC 27835  
252-329-4200 • 800-537-5564  
e-mail: [info@visitgreenvillenc.com](mailto:info@visitgreenvillenc.com)  
internet: [www.visitgreenvillenc.com](http://www.visitgreenvillenc.com)